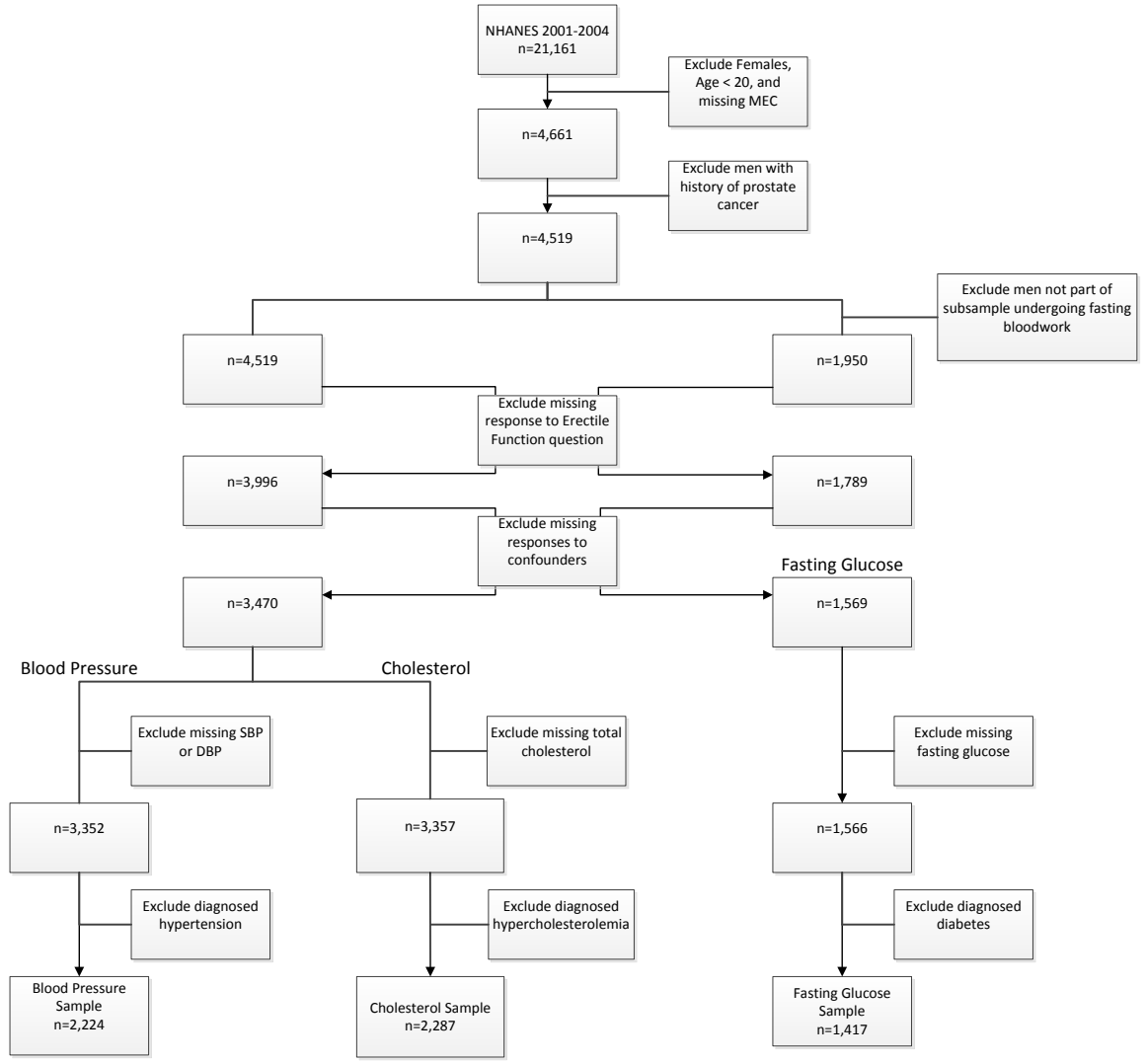


**Supplemental materials for:**

Skeldon SC, Detsky AS, Goldenberg S, Law MR. Erectile dysfunction and the presence of undiagnosed type 2 diabetes, hypertension and hypercholesterolemia. *Ann Fam Med*. 2015;13(4):342-346.

**Supplementary Figure.** Flowchart depicting creation of three analytic subsamples (Blood Pressure, Cholesterol, Fasting Glucose) from NHANES 2001-2004 for undiagnosed hypertension, hypercholesterolemia and diabetes.



*This supplemental material has been supplied by the author and has not been edited for content.*