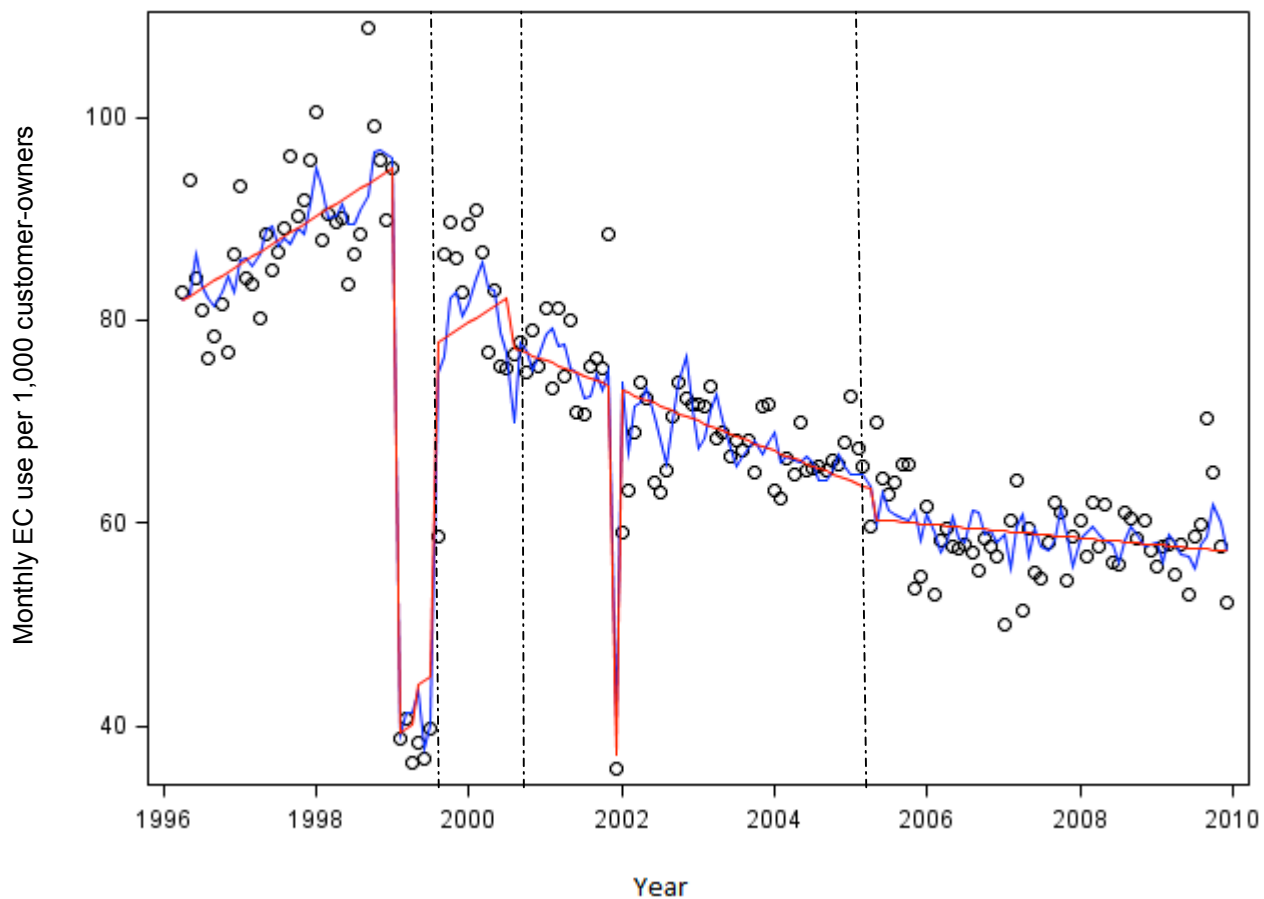


Online Supplementary Material

Driscoll DL, Hiratsuka V, Johnston JM, et al. Process and outcomes of patient-centered medical care with Alaska Native People at Southcentral Foundation. *Ann Fam Med*. 2013;11(Suppl_1):S41-S49.

http://www.annfammed.org/content/11/Suppl_1/S41

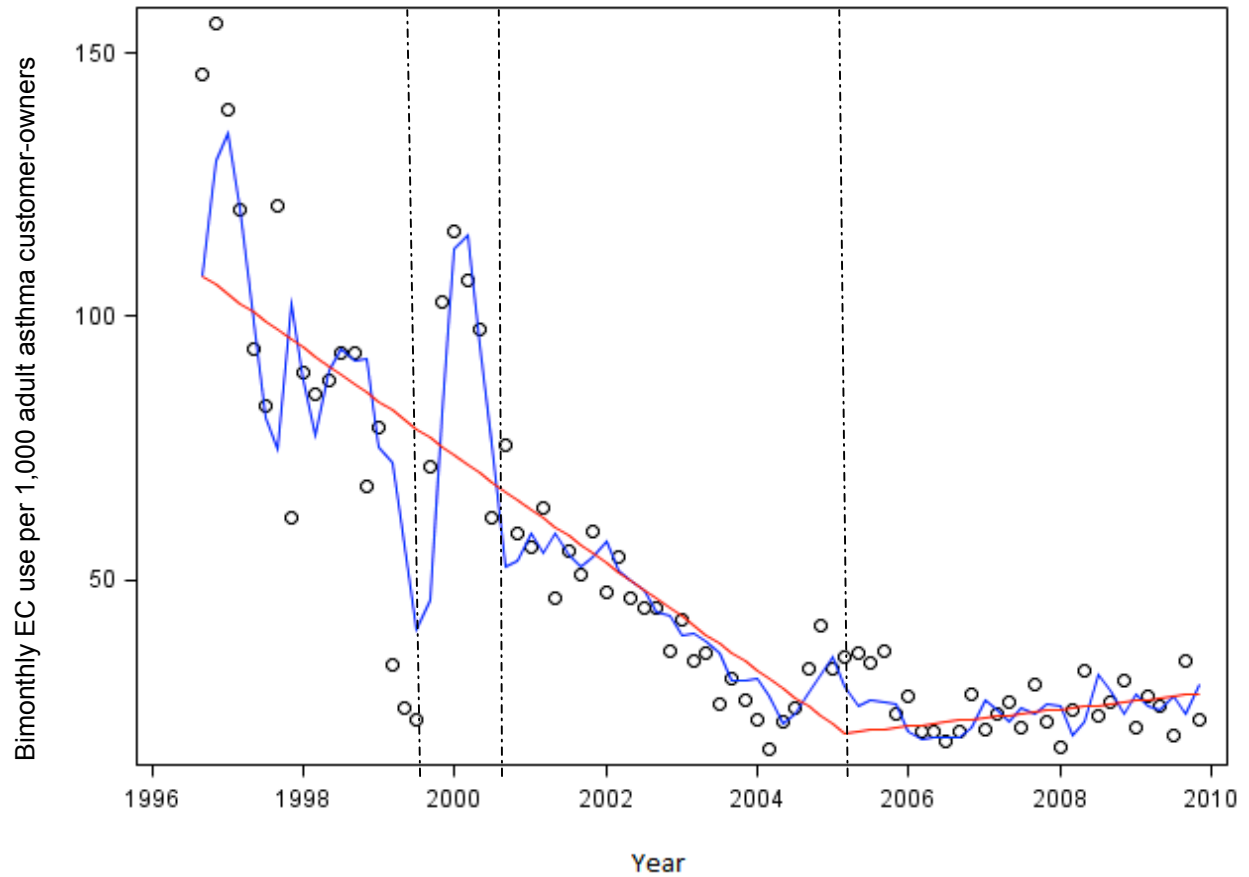
Supplemental Figure 1. Monthly emergency care use overall.



- Monthly rate extracted from RPMS.
- Inner product of estimated coefficients and independent variables.
- Predicted value including autoregressive components.

EC = emergency care; RPMS = Resource and Patient Management System.

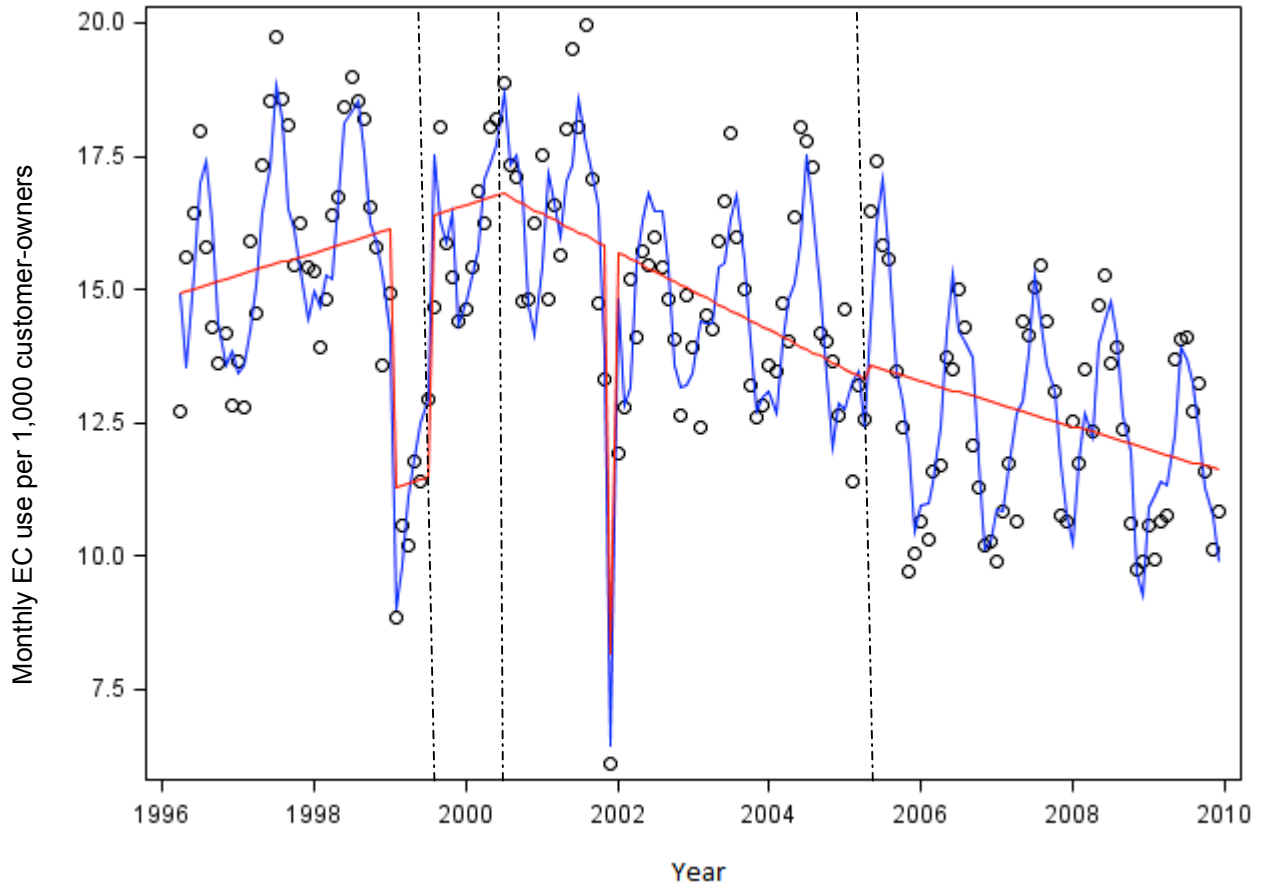
Supplemental Figure 2. Bimonthly emergency care use for asthma (primary or secondary diagnosis).



- Bimonthly rate extracted from RPMS.
- Inner product of estimated coefficients and independent variables.
- Predicted value including autoregressive components.

EC = emergency care; RPMS = Resource and Patient Management System.

Supplemental Figure 3. Monthly emergency care use for unintentional injuries.



- Monthly rate extracted from RPMS.
- Inner product of estimated coefficients and independent variables.
- Predicted value including autoregressive components.

EC = emergency care; RPMS = Resource and Patient Management System.