

Add submitted dates: 8/24/18, 9/24/18, 11/1/18

Supplemental materials for:

Busey B. Expanding the use of botulinum toxin in primary care for chronic migraine. *Ann Fam Med*. 2019;17(1):85.

Blake Busey, DO

Texas Tech University Health Sciences Center El Paso, Department of Family Medicine – Transmountain, El Paso, Texas

Mendoza Family Care Clinic, William Beaumont Army Medical Center, Fort Bliss, Texas Robin's note:

Submitted 8/24/18; submitted, revised, 9/24/18; accepted 11/1/18.

Acknowledgments: Dr Shawna Scully, DO, Neurology, DCMS William Beaumont Army Medical Center, Fort Bliss, Texas; Dr A. Peter Catinella, MD, Department of Family Medicine Chair, Texas Tech University Health Sciences Center El Paso Department of Family Medicine – Transmountain, El Paso, Texas.

Submitted August 24, 2018; submitted, revised, September 24, 2018; accepted November 1, 2018.

Key words: patient-centered medical home; PCMH; Plan-Do-Study-Act; patient satisfaction; relative value unit; procedure; botulinum for chronic migraine; access to care

References

1. Diener HC, Dodick DW, Aurora SK, et al; PREEMPT 2 Chronic Migraine Study Group. OnabotulinumtoxinA for treatment of chronic migraine: results from the double-blind, randomized, placebo-controlled phase of the PREEMPT 2 trial. *Cephalalgia*. 2010;30(7):804-814.
2. Blumenfeld AM, Stark RJ, Freeman MC, Orejudos A, Manack Adams A. Long-term study of the efficacy and safety of OnabotulinumtoxinA for the prevention of chronic migraine: COMPEL study. *J Headache Pain*. 2018;19(1):13.
3. Herd CP, Tomlinson CL, Rick C, et al. Botulinum toxins for the prevention of migraine in adults. *Cochrane Database Syst Rev*. 2018;6:CD011616.

Additional Appendices – https://drive.google.com/drive/folders/1_Iq0bHI3ly7K5cfXk_NeqbYso6kDeIk?usp=sharing

Botulinum Toxin in Primary Care

Blake Busey, DO

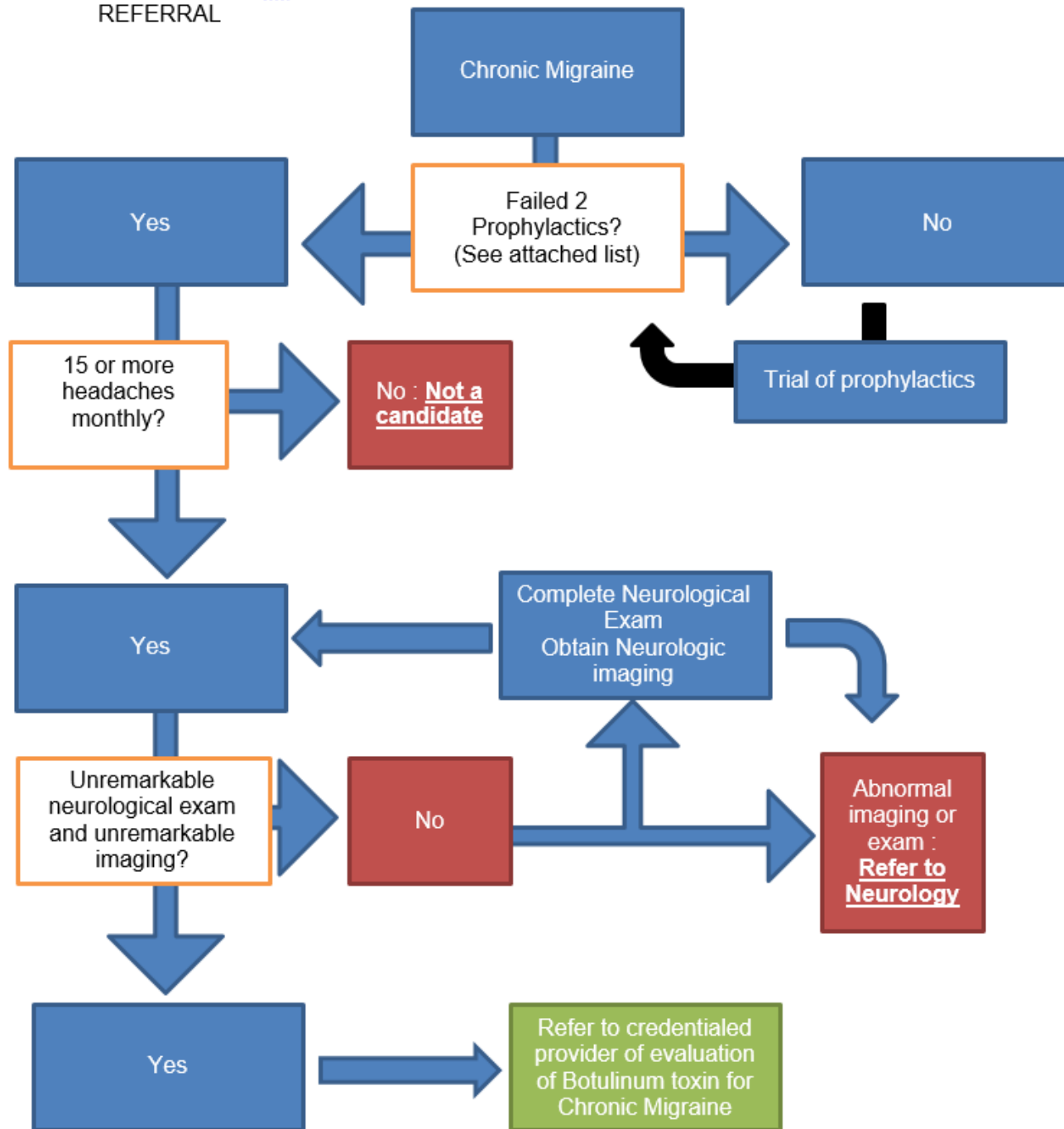
Reconstitution

- Reconstitute in the Immunizations Room
- Verify hologram “Allergan”
- Draw up appropriate Normal Saline
 - 100 U vial : 2 cc
 - 200 U vial : 4 cc
- Place 21G 2” needle on saline syringe (R205 XL-2)
- Verify vacuum seal – control delivery of normal saline to avoid dispersing granules
- Swirl and roll to mix, do not invert or shake
- “Burp” vial to equalize pressure
- Draw reconstituted contents of botulinum toxin into syringes
 - Syringes stored in labeled baggy (botulinum toxin 5U/0.1ml saline solution)

Botulinum toxin for chronic migraine

- CRITERIA
- 15 headaches monthly
- Unmedicated Headache lasts 4 or more hours
- MRI and neurological exam is unremarkable
- Failed 2 prophylactic medications

ATTACHMENT 1: ALGORITHM FOR BOTULINUM TOXIN FOR CHRONIC MIGRAINE REFERRAL



Botulinum toxin for chronic migraine

- SETUP
- Fill three 1 cc syringes so that there is 1 cc botulinum toxin (5U/0.1ml)
- Fill one 1 cc syringe to 0.1 cc botulinum toxin
- Have 10 or more alcohol swabs available
- Consent Signed
- Time out completed – Time annotated

Botulinum toxin for chronic migraine

- INITIAL APPOINTMENT
- Consent completed
- Review MRI, neurological exam, and migraine history
- FOLLOW UP APPOINTMENT
- Consent completed
- Review response from prior visit
- Review any allergic responses to botulinum toxin

Botulinum toxin for chronic migraine

- INJECTION
- Clean skin with alcohol swabs
- Inject 0.1cc of (5U/0.1cc botulinum toxin) at each of the 31 locations



*Injections are on both the right and left side of the head.

Botulinum toxin for chronic migraine

- DOCUMENTATION
- Diagnosis – G43.7XX
- CPT – 64615
 - Add 50 modifier for bilateral procedure
- HCPCS – J0585
 - Modify to 155