

Supplemental materials for

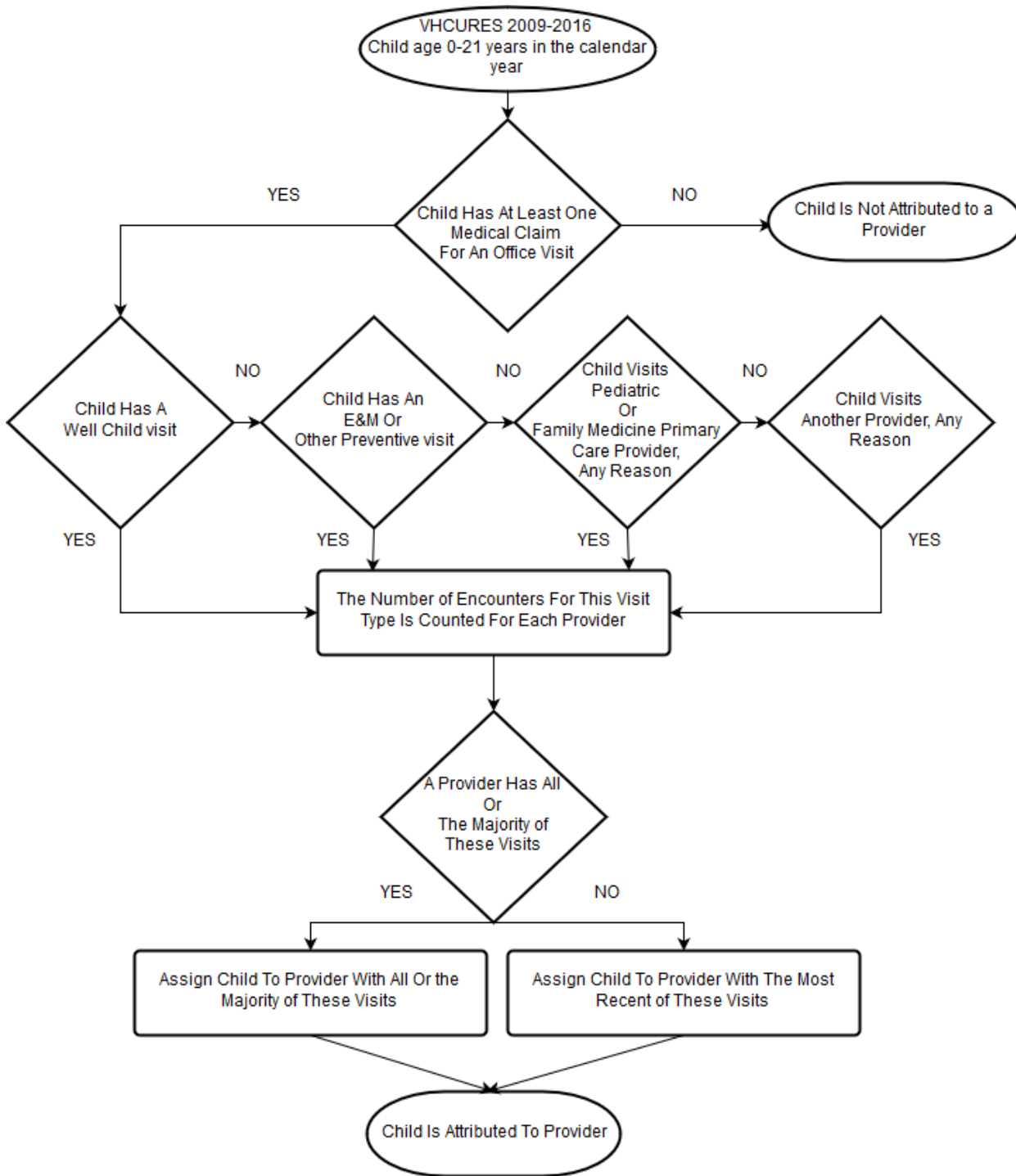
Wasserman RC, Varni SE, Hollander MC, Harder VS. Change in site of children's primary care: a longitudinal population-based analysis. *Ann Fam Med.* 2019;17(5):390-395.

Supplemental Table: Current Procedural Terminology (CPT), International Classification of Disease (ICD) Codes, and Provider Taxonomies Used to Identify Providers and Visit Types for the Attribution of Children to Providers

	CPT Code	ICD9-CM Code	ICD10-CM Code
Well-Child Visits	99381-99385 99391-99395 99432 99461	V20.2 V20.3 V70.0 V70.3 V70.5 V70.6 V70.8 V70.9	Z00.129 Z00.110 Z00.111 Z00.00 Z02.89 Z20.1 Z02.3 Z02.89 Z00.8 Z00.5
Evaluation and Management Visits	99201-99205 99211-99215 99341-99345 99347-99350 (HCPCS Code) T1015*		
Other Preventive Visits	99401-99404 99411-99412 99420 99429 99406-99409 96110-96111 99441-99444 99339-99340 99173-99174 92551-92552 92567 90460-90461 90471-90474 90465-90468 90470 99050	V64.00 V64.01 V64.02 V64.03 V64.04 V64.05 V64.06	Z28.9 Z28.01 Z28.02 Z28.03 Z28.04 Z28.21 Z28.81 Z28.82
Provider Taxonomy			
Primary Care Taxonomies for	208000000X	363LP0200X	

Pediatric and Family Medicine Practitioners	2080A0000X 2080P0006X 2080X0001X 207Q00000X 207QA0000X	364SP0200X 363LF0000X
--	--	--------------------------

*Note: T1015 identifies an Evaluation and Management visit if it is not accompanied by any ICD9-CM or ICD10-CM first or second diagnosis identified for Well-Child Visits



Supplemental Figure: Graphical depiction of our hierarchical approach assigning children to providers