

## Supplemental materials for

Aubin M, Vezina L, Verreault R, et al. Continuity of cancer care and collaboration between family physicians and oncologists: results of a randomized clinical trial. *Ann Fam Med*. 2021;19(2):117-125.

**Supplemental Table 1. Baseline Family Physician Characteristics**

|  | <b>Experimental<br/>(n=78)</b> |             | <b>Control<br/>(n=74)</b> |             |                |
|--|--------------------------------|-------------|---------------------------|-------------|----------------|
|  | <b>Mean ± SD</b>               |             | <b>Mean ± SD</b>          |             | <b>p value</b> |
| <b>Age</b>                                     | 51.7 ± 9.4                     |             | 54.1 ± 8.5                |             | 0.10           |
| <b>Years in practice</b>                       | 27.2 ± 11.1                    |             | 29.7 ± 9.2                |             | 0.13           |
|  | <b>N</b>                       | <b>%</b>    | <b>N</b>                  | <b>%</b>    | <b>p value</b> |
| <b>Gender Female</b>                           | 35                             | 44.9        | 28                        | 37.8        | 0.38           |
| <b>Mode of payment</b>                         |                                |             |                           |             |                |
| Fee for service                                | 38                             | 48.7        | 46                        | 62.2        | 0.07           |
| Salary   | 3                              | 3.9         | 2                         | 2.7         |                |
| Rate per hour                                  | 11                             | 14.1        | 2                         | 2.7         |                |
| Mixed  | 26                             | 33.3        | 24                        | 32.4        |                |
| <b>On call System</b>                          |                                |             |                           |             |                |
| No   | 17                             | 21.8        | 21                        | 28.4        | 0.64           |
| Only when the clinic is open                   | 17                             | 21.8        | 14                        | 18.9        |                |
| 24 /7 On call system                           | 40                             | 51.3        | 33                        | 44.6        |                |
| Other  | 4                              | 5.1         | 6                         | 8.1         |                |
| <b>Involved in palliative care<sup>1</sup></b> | <b>62</b>                      | <b>79.5</b> | <b>62</b>                 | <b>83.8</b> | <b>0.49</b>    |
| At the office only                             | 57                             | 73.1        | 55                        | 74.3        | 0.86           |
| At home  | 49                             | 62.8        | 49                        | 66.2        | 0.67           |
| At the hospital/hospice                        | 26                             | 33.3        | 18                        | 24.3        | 0.22           |
| <b>Homecare practice<sup>2</sup></b>           | <b>56</b>                      | <b>71.8</b> | <b>57</b>                 | <b>77.0</b> | <b>0.46</b>    |
| Regularly                                      | 41                             | 52.6        | 42                        | 56.8        | 0.60           |
| Occasionally                                   | 18                             | 23.1        | 23                        | 31.1        | 0.27           |

**1: Proportion for each practice setting is calculated for physicians involved in palliative care only (N=124);**

*Some physicians practice palliative care in more than one setting.*

**2: Proportion for each type of homecare visit is calculated for physicians involved in this practice (N=113).**

**Supplemental Table 2. Baseline Family Physician Primary Outcomes**

| <b>Primary Outcome</b>                                  | <b>Experimental<br/>(n = 78)</b> | <b>Control<br/>(n = 74)</b> | <b>P Value</b> |
|---|----------------------------------|-----------------------------|----------------|
| Interprofessional collaboration, mean (SD) <sup>a</sup> | 3.5 (0.9)                        | 3.7 (1.0)                   | .18            |
| Relational continuity, mean (SD) <sup>b</sup>           |                                  |                             |                |
| Knowledge of patient                                    | 4.3 (0.5)                        | 4.3 (0.5)                   | .75            |
| Partnership and confidence                              | 4.4 (0.5)                        | 4.3 (0.5)                   | .58            |
| Pattern of care, No. (%)                                |                                  |                             | .86            |
| Sequential <sup>c</sup>                                 | 2 (2.6)                          | 1 (1.4)                     |                |
| Parallel <sup>d</sup>                                   | 32 (41.0)                        | 30 (40.5)                   |                |
| Shared <sup>e</sup>                                     | 44 (56.4)                        | 43 (58.1)                   |                |
| Good informational continuity, No. (%) <sup>f</sup>     | 18 (23.1)                        | 22 (29.7)                   | .3             |
| Good management continuity, No. (%) <sup>f</sup>        | 36 (46.2)                        | 40 (54.1)                   | .36            |

<sup>a</sup> Score range 1-5. A higher score indicates a better perception of interprofessional collaboration.

<sup>b</sup> Score range 1-5. A higher score indicates a better perception of relational continuity.

<sup>c</sup> Sequential: family physicians are not involved when specialists are involved.

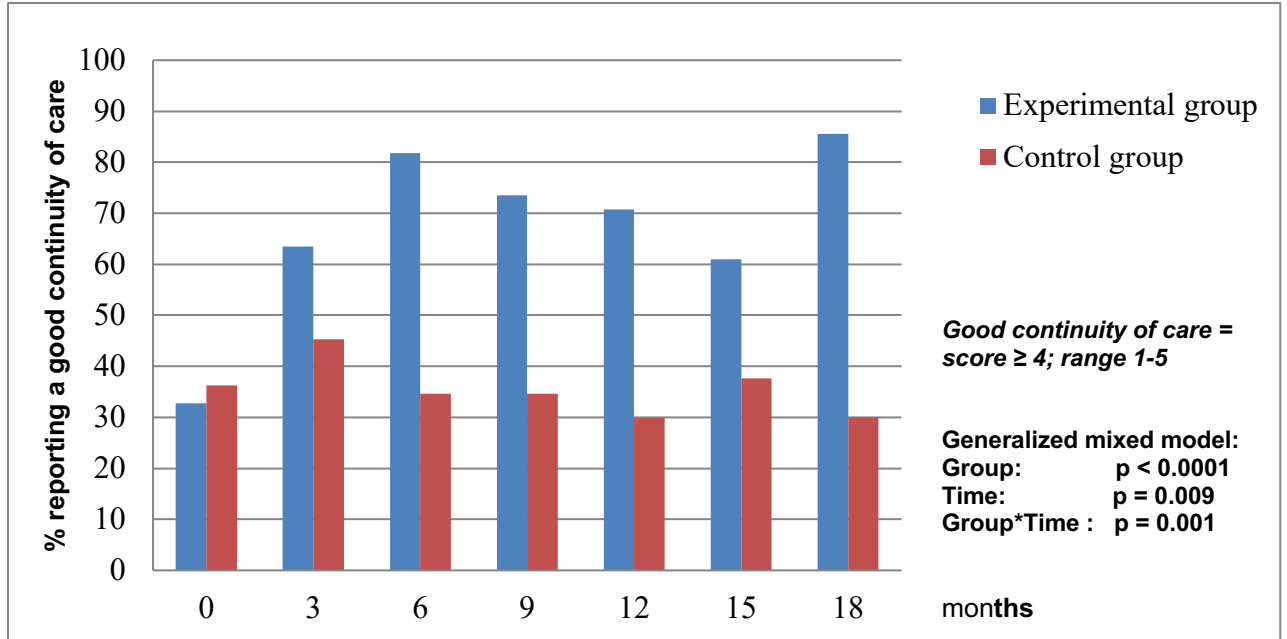
<sup>d</sup> Parallel: family physicians are involved with health problems unrelated to cancer.

<sup>e</sup> Shared: family physicians and the oncology team are both involved in cancer care.

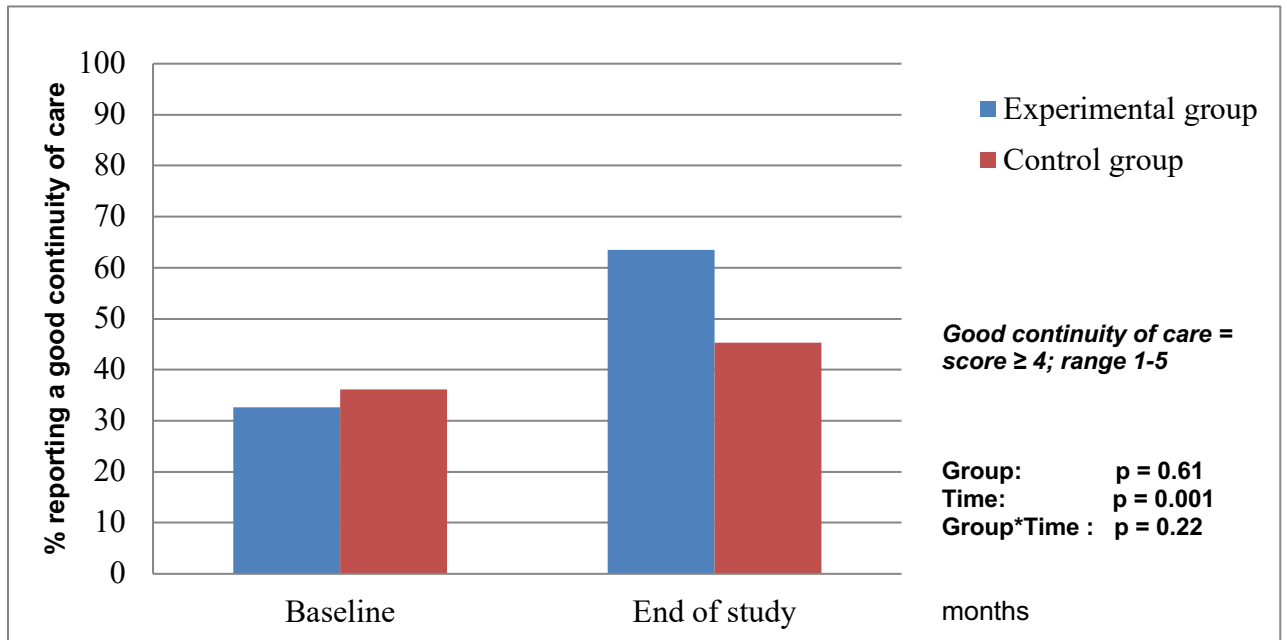
<sup>f</sup> Family physicians with a score  $\geq 4$  (range 1-5) perceived good continuity.

## Supplemental Figure 1A and 1B: Effect of the intervention on informational continuity of care

### A. Patient Perception

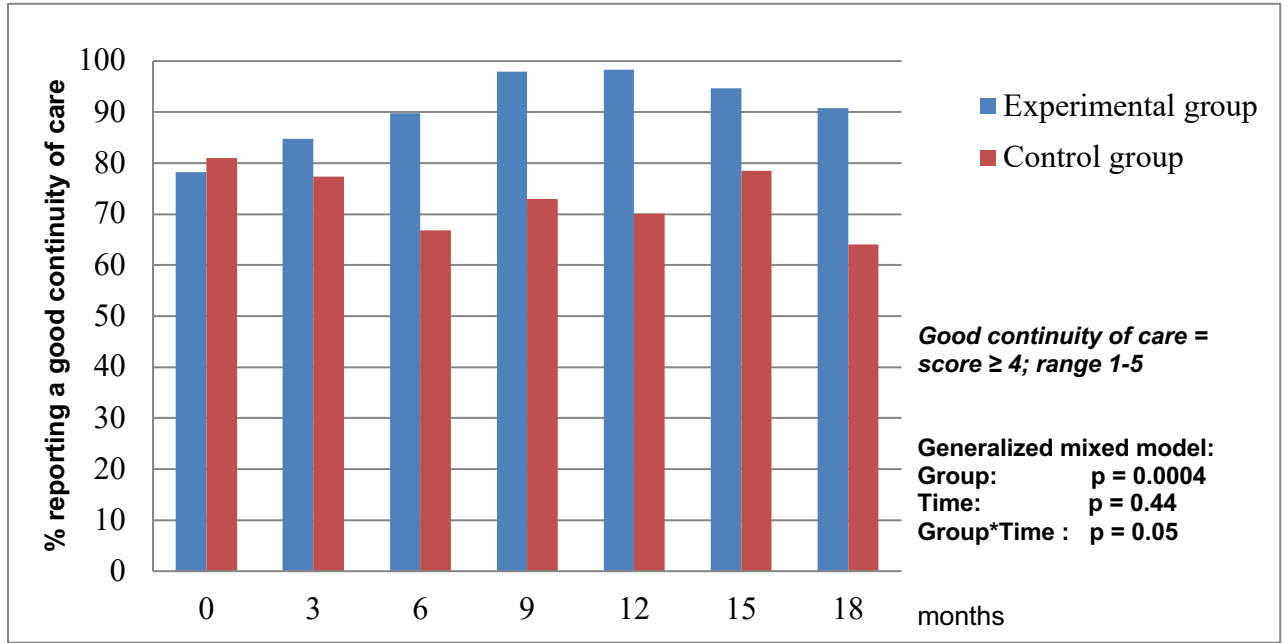


### B. Family Physician Perception

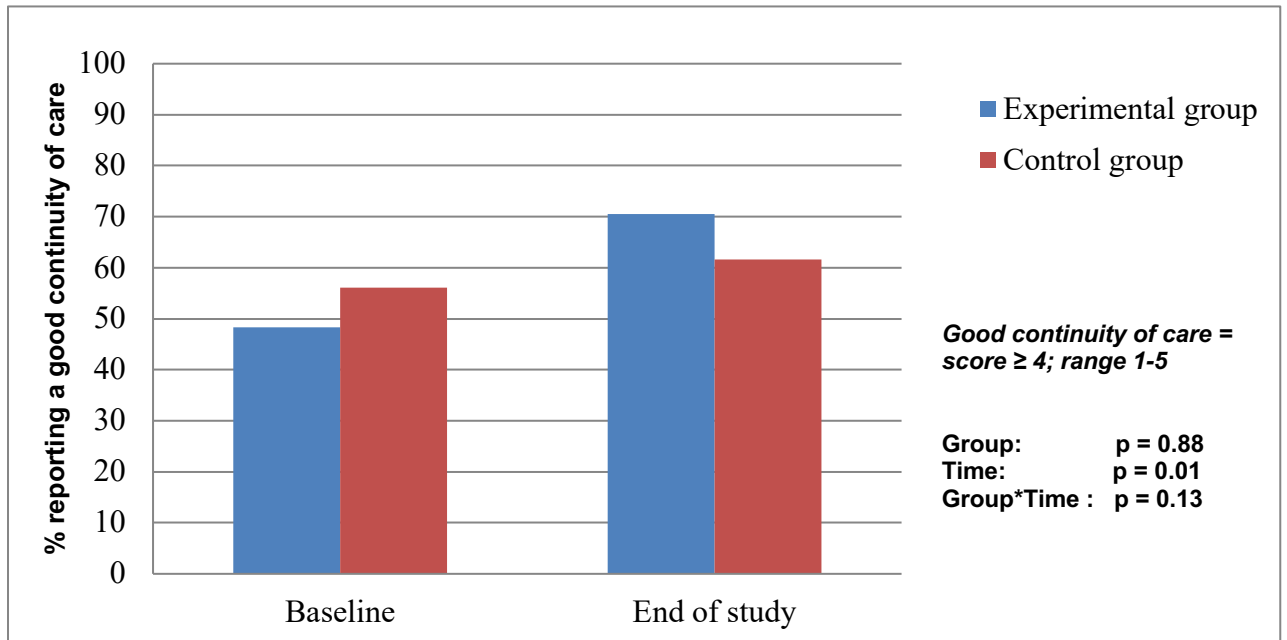


## Supplemental Figure 2A and 2B: Effect of the intervention on management continuity of care

### A. Patient Perception



### B. Family Physician Perception



**Supplemental Figure 3. Mean number of visits to the family physician throughout the cancer care trajectory according to all patients' perception of FP pattern of care with the oncology team**

