

Supplemental materials for

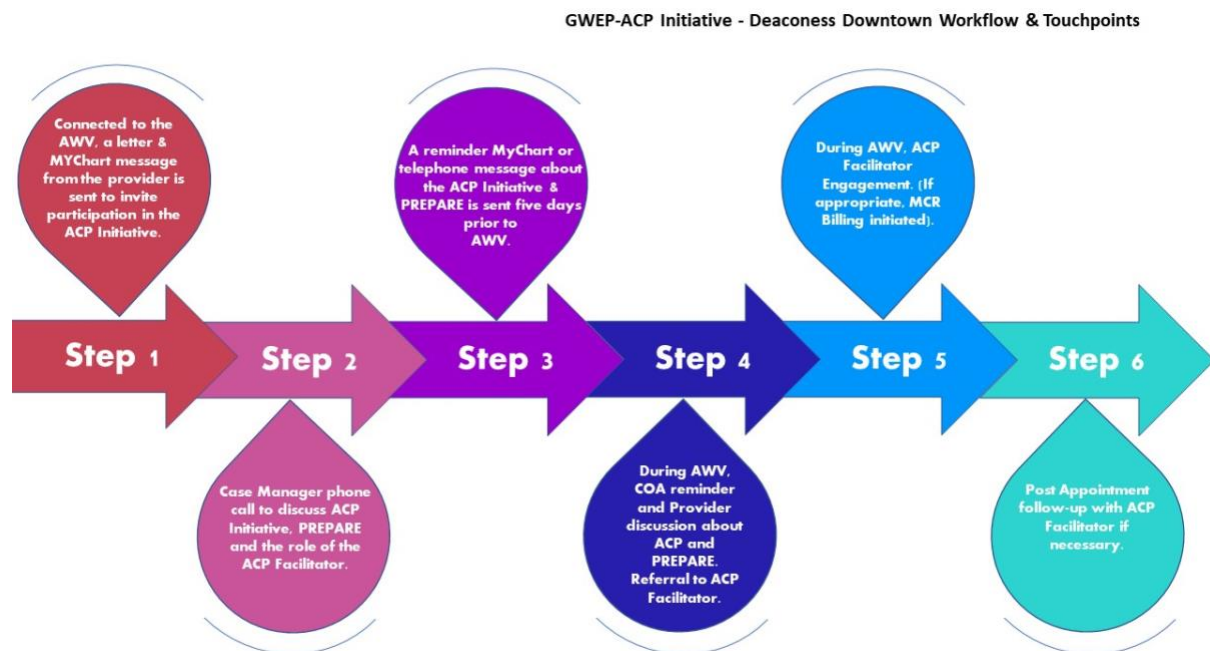
Valadares KJ, Smith WR, Leahy SP, Ehlman MC, Arnold R, Artz J. Adapting primary care workflows to promote advance care planning. *Ann Fam Med*. 2022;20(4):384.

Funding support: This work was initiated through the University of Southern Indiana (USI) GWEP. The USI GWEP is supported by the Health Resources and Services Administration (HRSA) of the US Department of Health and Human Services (HHS) as part of an award totaling \$3,691,706 with 0% financed with nongovernmental sources. The contents are those of the author(s) and do not necessarily represent the official views of, nor an endorsement, by HRSA, HHS or the US government.

FIGURES

Figure 1 represents the ACP touchpoints that each Provider team is implementing during the initiative.

Figure 1



Footnotes:

AWV = Annual Wellness Visit; ACP = Advance Care Planning; PREPARE = PREPARE™ for your Care; MCR = Medicare; 4Ms = 4Ms of an Age-Friendly Health System (What **M**atters, **M**edication, **M**entation, **M**obility)