

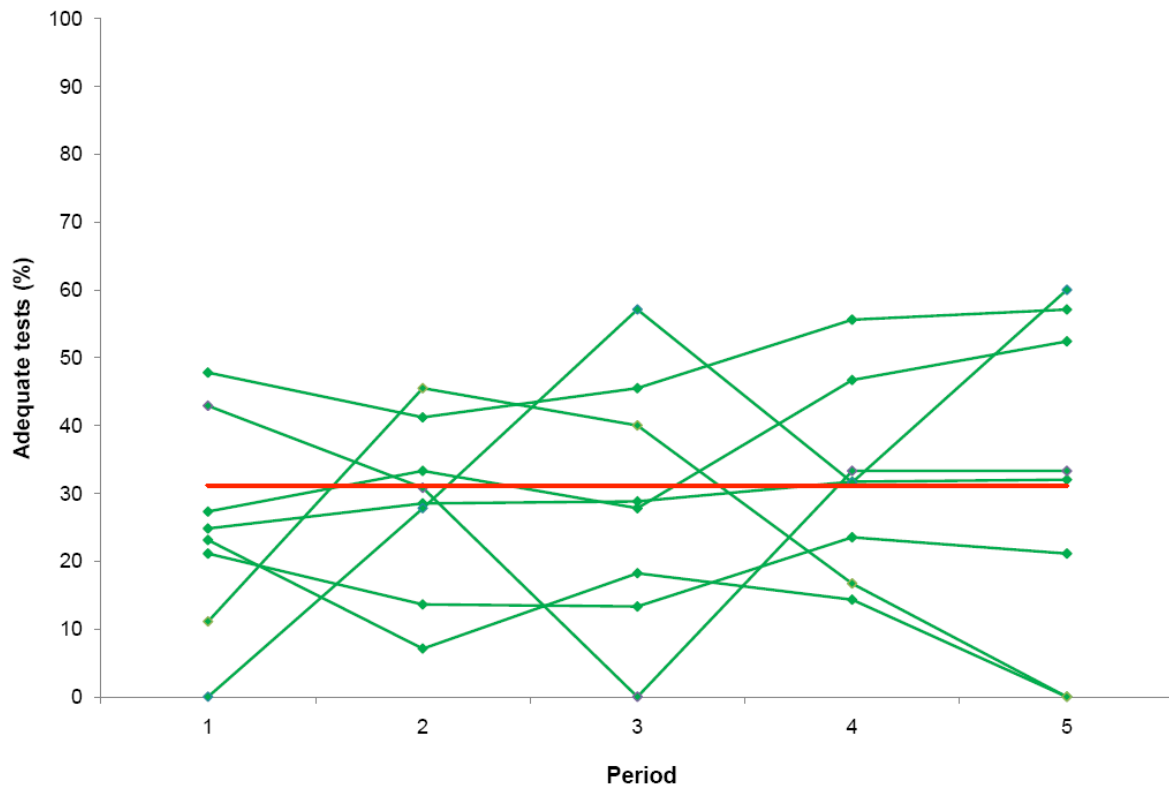
Online Supplementary Material

Schermer TR, Akkermans RP, Crockett AJ, et al. Effect of e-learning and repeated performance feedback on spirometry test quality in family practice: a cluster trial. *Ann Fam Med*. 2011;9(4):330-336.

<http://www.annfammed.org/cgi/content/full/9/4/330/DC1>

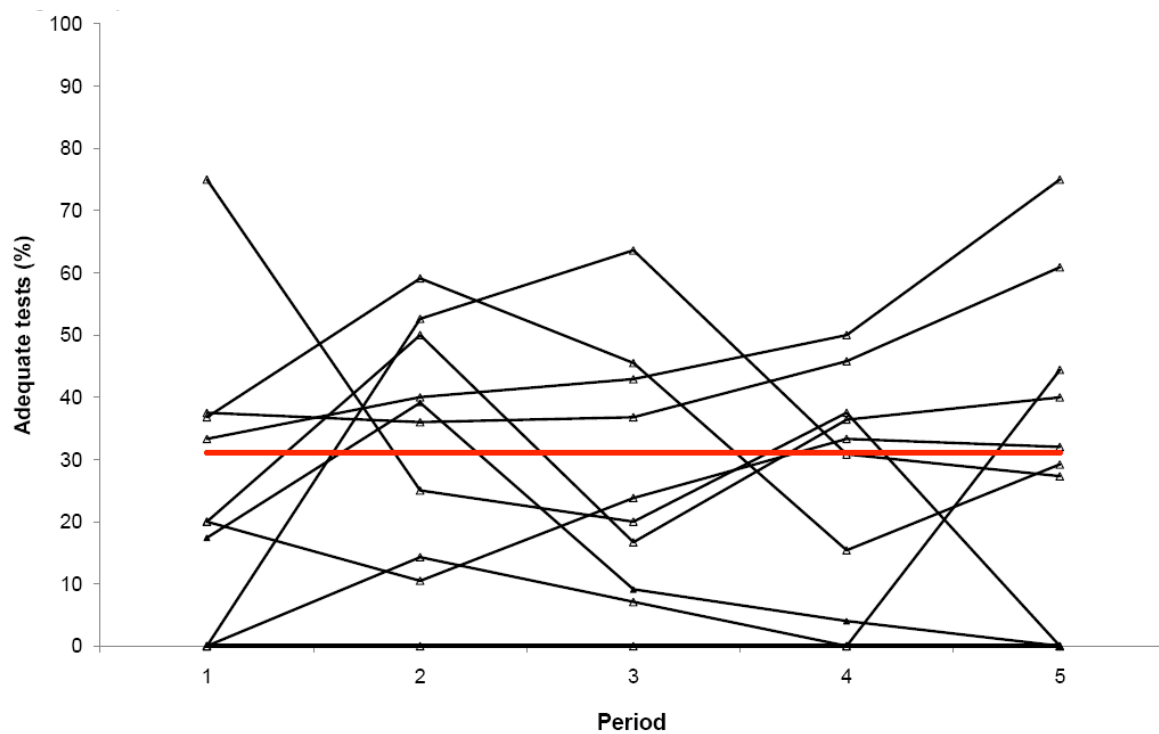
Supplemental Figure 1, Panels A & B. Rate of adequate spirometry tests for the primary outcome per practice and per period for the intervention.

Panel A. Practices in intervention group



Green line = spirometry tests; red line = overall mean rate of adequate tests.

Panel B. Practices in control group



Black lines = spirometry tests; red line = overall mean rate of adequate tests.