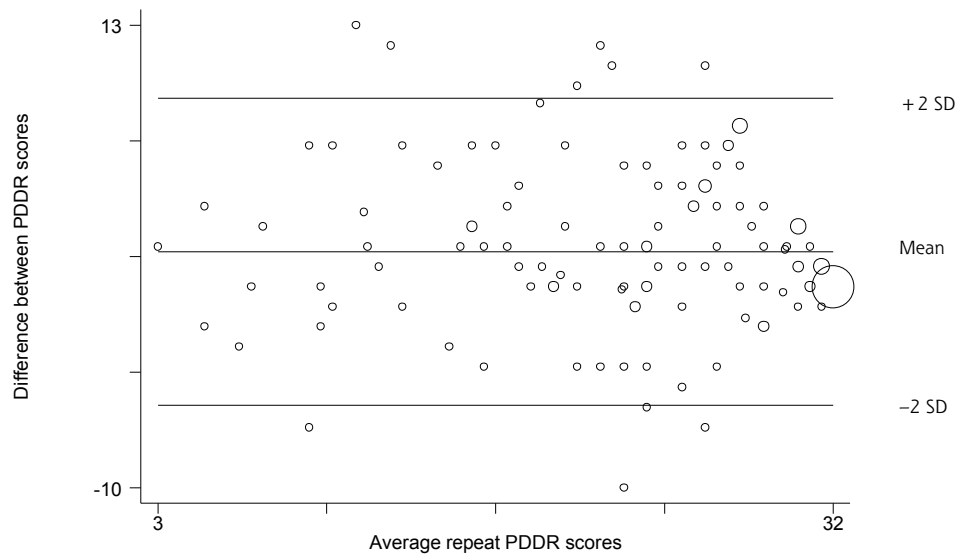


Ridd MJ, Lewis G, Peters TJ, Salisbury C. The Patient-Doctor Depth-of-Relationship Scale: development and validation. *Ann Fam Med*. 2011;9(6):538-545.

<http://www.annfammed.org/content/9/6/538/DC1>

Supplemental Figure 1. Test-retest data (Bland Altman plot).



PDDR = Patient-Doctor Depth-of-Relationship.
Note: The circle size reflects the number of overlapping scores.

ANNALS OF

FAMILY MEDICINE
Online Supplementary Material

Ridd MJ, Lewis G, Peters TJ, Salisbury C. The Patient-Doctor Depth-of-Relationship Scale: development and validation. *Ann Fam Med*. 2011;9(6):538-545.

<http://www.annfammed.org/content/9/6/538/DC1>

Supplemental Table 1. Pilot Round 1 Of Patient-Doctor Depth-of-Relationship Questionnaire Development: Varimax Rotation 2-Factor Solution Using Principal Factors

Item No	Text	Factor		Uniqueness ^a
		1	2	
1	I know this doctor	0.2871	0.8348	0.2206
2	This doctor knows my background	0.3125	0.8207	0.2287
3	This doctor knows my home life	0.2148	0.8412	0.2462
4	I get on with this doctor	0.6017	0.5327	0.3541
5	This doctor knows me as a person	0.3300	0.8254	0.2099
6	This doctor knows what works for me	0.4078	0.7699	0.2409
7	This doctor knows how I feel about things	0.3836	0.7582	0.2779
8	I know what to expect with this doctor	0.4610	0.7260	0.2604
9	This doctor supports me	0.6288	0.5680	0.2821
10	This doctor understands how my problem(s) affect me	0.6123	0.5468	0.3260
11	This doctor really cares for me	0.7351	0.3930	0.3053
12	There is a strong bond between me and this doctor	0.6172	0.5684	0.2960
13	I can totally depend on this doctor	0.7229	0.4474	0.2773
14	This doctor feels completely relaxed with me	0.7561	0.3423	0.3112
15	This doctor takes me seriously	0.7984	0.2457	0.3022
16	I can be myself with this doctor	0.8136	0.2682	0.2661
17	This doctor tries hard to work with me	0.8003	0.3406	0.2435
18	This doctor knows exactly what to expect with me	0.5763	0.5993	0.3086
19	I have complete confidence in this doctor	0.8024	0.3310	0.2466
20	This doctor accepts me the way I am	0.7221	0.3205	0.3759
21	This doctor knows me inside-out	0.4505	0.6985	0.3091
22	I feel totally relaxed with this doctor	0.8237	0.2834	0.2412
23	My rapport with this doctor is	0.7604	0.4154	0.2491
24	This doctor's dedication to my care is	0.8209	0.3742	0.1861
25	My trust in this doctor is	0.8202	0.3731	0.1880
26	This doctor's respect for me is	0.8077	0.3802	0.2030
27	My relationship with this doctor is	0.7689	0.4501	0.2062
28	This doctor's trust in me is	0.7792	0.3909	0.2401
29	My respect for this doctor is	0.8030	0.3515	0.2316
30	If I need to see a doctor, I try to see this one	0.5558	0.4684	0.4717
31	I would forgive this doctor if he/she made a genuine mistake	0.5158	0.3351	0.6216
32	I would be very concerned if this doctor left	0.6246	0.4821	0.3775

Note: numbers in boldface indicate factor alignment.
^a Proportion of the common variance of the variable not associated with the factors (1–communality).

ANNALS OF

FAMILY MEDICINE
Online Supplementary Material

Ridd MJ, Lewis G, Peters TJ, Salisbury C. The Patient-Doctor Depth-of-Relationship Scale: development and validation. *Ann Fam Med*. 2011;9(6):538-545.

<http://www.annfammed.org/content/9/6/538/DC1>

Supplemental Table 2. Pilot Round 2 of Patient-Doctor Depth-of-Relationship Questionnaire Development: Varimax Rotation 2-Factor Solution Using Principal Factors

Item No	Text	Factor		Uniqueness ^a
		1	2	
1	I know this doctor very well	0.8678	0.3029	0.1552
2	This doctor knows me as a person	0.8924	0.2513	0.1405
3	This doctor really knows how I feel about things	0.7941	0.3571	0.2419
4	I know what to expect with this doctor	0.8616	0.3463	0.1377
5	This doctor really cares for me	0.4230	0.7199	0.3028
6	This doctor takes me seriously	0.3260	0.8507	0.1701
7	This doctor accepts me the way I am	0.3537	0.7596	0.2978
8	I feel totally relaxed with this doctor	0.3453	0.8062	0.2309
9	I would forgive this doctor if he/she made a genuine mistake	0.1976	0.5037	0.7072
10	I would be very sorry if this doctor left	0.4953	0.6181	0.3726

Note: numbers in boldface indicate factor alignment.
^a Proportion of the common variance of the variable not associated with the factors (1–communality).